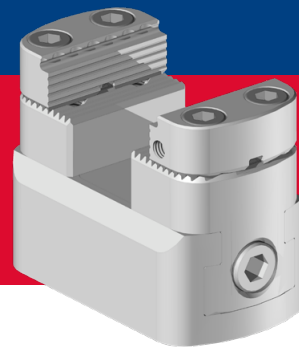


GREMOTOOL

PRÄZISIONSSPANNSYSTEME



LC-Series



swiss
made 



GREMOTOOL
Precision clamping systems

Wilerstrasse 3
CH-9200 Gossau

info@gremotool.ch
www.gremotool.ch

phone +41 (0)71 930 03 90

Overview

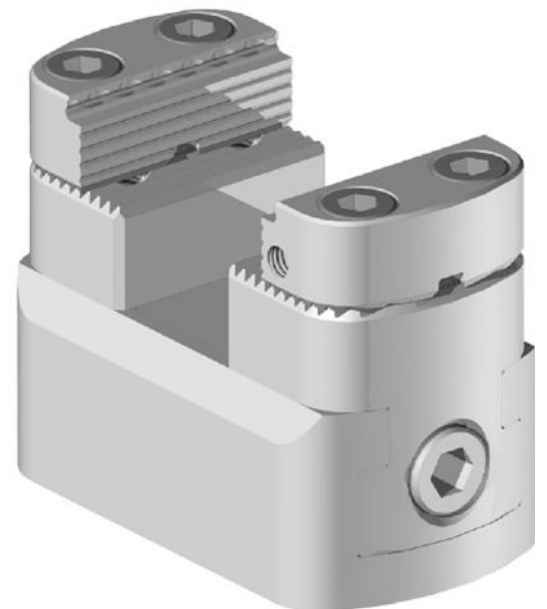
LC-Series

Product presentation	3
Sizing guide	5
Torque value	7
Dimensions	9
Applications	17
Zero-point clamping system	17
Fixtures	18
Accessories	19
Jaws	19
Automation Solutions	21
Impressum	23

Product presentation

LC-Series

The Low Clamp series, with a completely closed base body, is suitable for any production process. The chips do not remain in the base body and can therefore be easily removed. In automation with a robot, for example, simply by turning the clamp. The low design allows versatile use with low weight.



Benefits of LC-Series

Clamping force

The high clamping forces of the LC series can be adjusted by the applied torque to the spindle. This allows to clamp plastic workpieces without deformation and forged parts will not be damaging the clamp.

Centring precision

The special spindle and construction of the LC series ensure the user precise centring of +/- 0.01 mm in the centre of the clamp.

Accessibility

The flat silhouette of the LC series allows installation on all pallets, towers, and pyramids with maximum workpiece sizes. The symmetrical design of the clamp minimises interfering contours on both sides.

Compact

The compact design of the LC series allows to be used on all machining Centres. The clamps are easy to handle, due to their low weight.

Low maintenance

Due to design chips don't remain into the clamp, therefore the device has a low maintenance.

Quick tooling

The LC series can be equipped with various connection options. The standard «foot» is suitable for grooved tables and pallet systems. In addition, solutions can as well be offered for perforated grid plates and clamping-handling.

Large range of jaws

The entire Gremotool jaws can be used on the LC series from gripping to soft jaws made of aluminum, no wishes remain unfulfilled for workpiece clamping requirements.

The jaws are equipped with the uniform Gremotool serration. This means you can change the jaws very fast.

Sizing guide

LC-Series



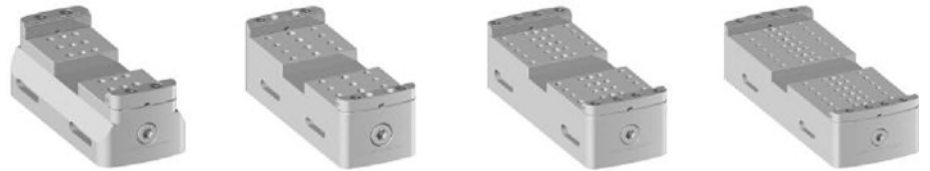
LC-Sizes		LC-34	LC-40	LC-50	LC-60
Jaw width	[mm]	34	40	50	60
Clamping range	[mm]	0-36	0-86	0-106	0-136
Support height *	[mm]	50	50	65	75
Max. tightening torque	[Nm]	52	52	95	95
Max. clamping force	[kN]	15	15	25	25
Total length	[mm]	70	120	148	178
Total width**	[mm]	40	52	70	100
Total height**	[mm]	41	41	56	62
Spanner width	[mm]	6	6	8	8
Dimensions	[kg]	1	2	4.4	6.7

* with Standard SC gripping jaws

** without jaws

Sizing guide

LC-Series



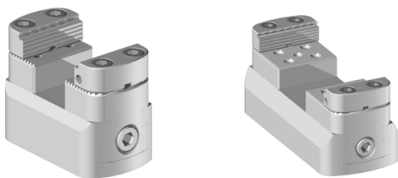
LC-Sizes		LC-74	LC-100	LC-120	LC-150
Jaw width	[mm]	74	100	120	150
Clamping range	[mm]	0-180	0-228	0-270	0-358
Support height *	[mm]	75	85	90	90
Max. tightening torque	[Nm]	165	240	240	240
Max. clamping range	[kN]	45	65	65	65
Total length	[mm]	224	272	322	410
Total width**	[mm]	100	100	120	150
Total height**	[mm]	62	73	78	78
Spanner width	[mm]	10	12	12	12
Dimension	[kg]	10.3	15.6	23.9	38.5

* with standard SC-gripping jaws

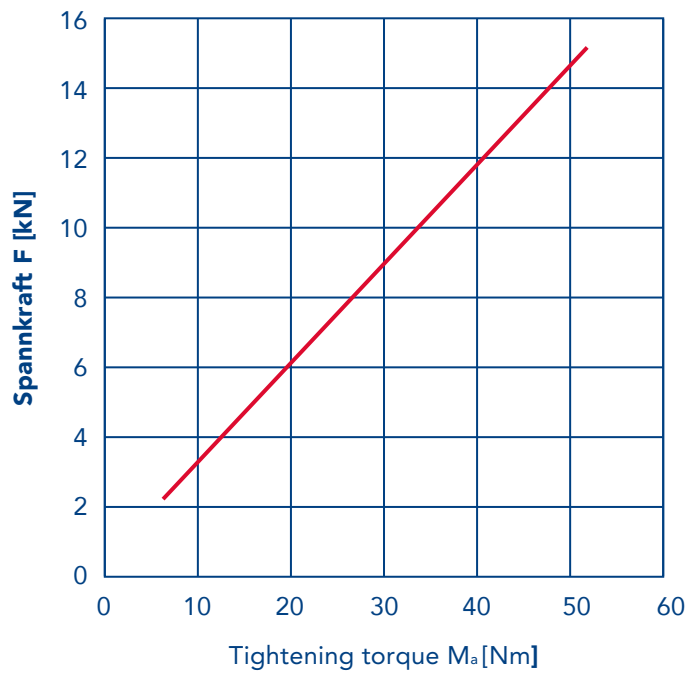
** without jaws

Torque value

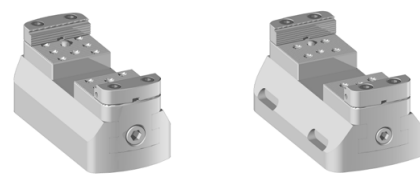
LC-Series



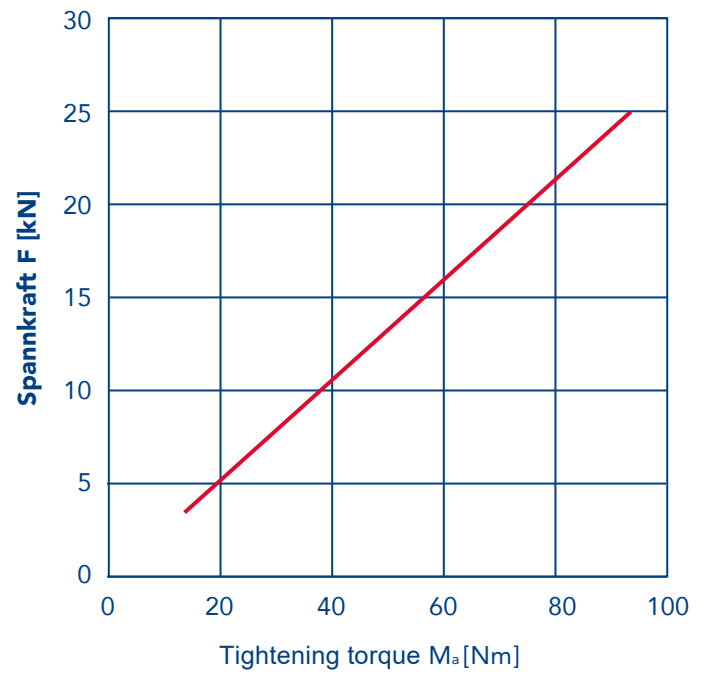
LC-34 / LC-40



M_a max	52 Nm
M_a min	7.8 Nm
F max	15 kN
F min	2.25 kN



LC-50 / LC-60



M_a max	95 Nm
M_a min	14.25 Nm
F max	25 kN
F min	3.75 kN

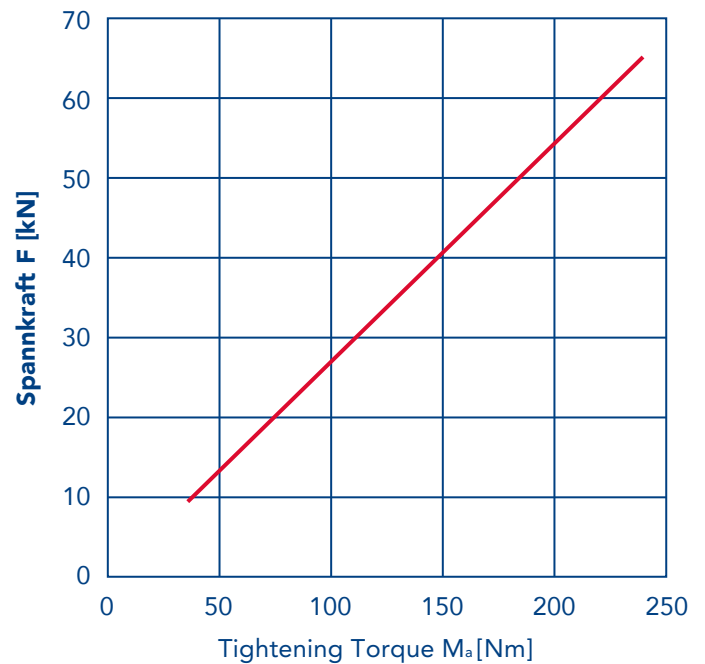
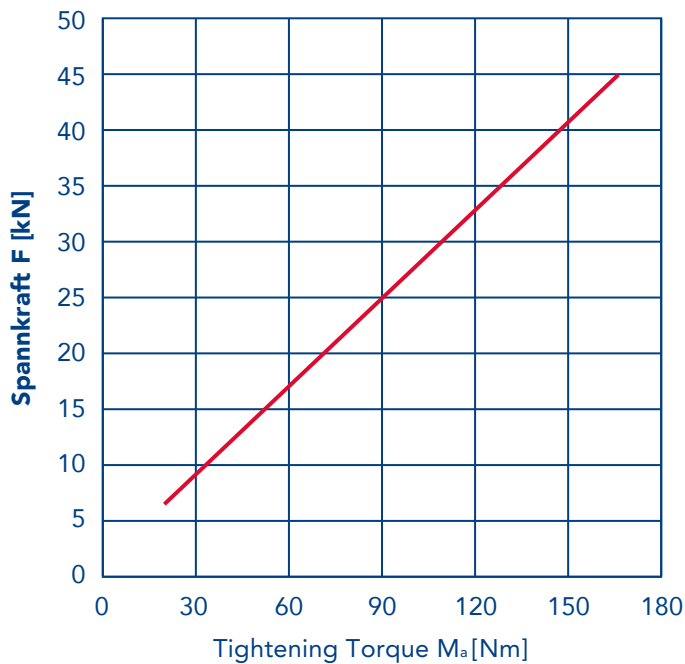
Torque value

LC-Series



LC-74

LC-100 / LC-120 / LC-150

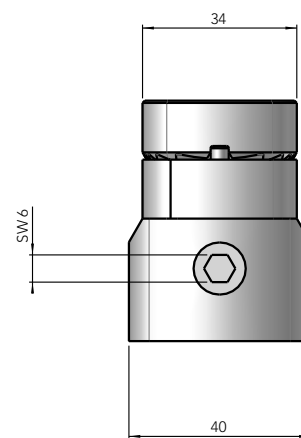
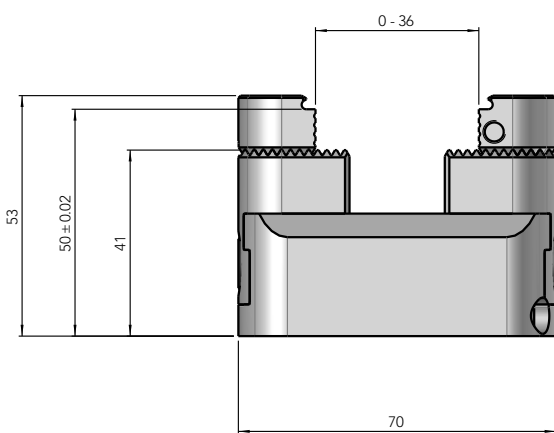
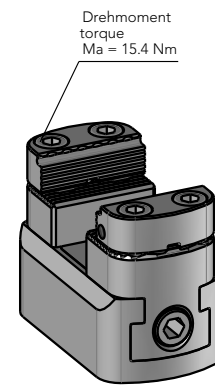
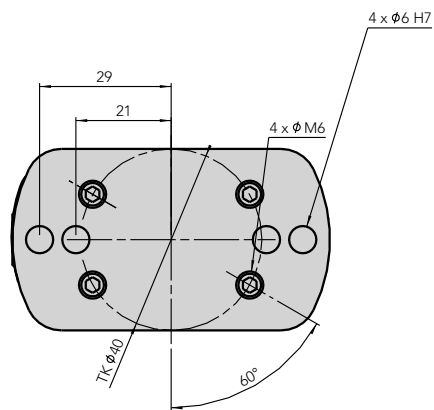


M_a max	165 Nm
M_a min	24.75 Nm
F max	45 kN
F min	6.75 kN

M_a max	240 Nm
M_a min	36 Nm
F max	65 kN
F min	9.75 kN

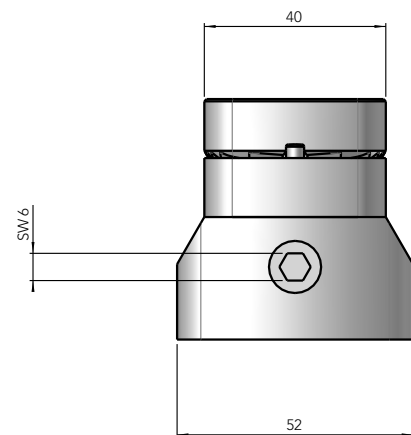
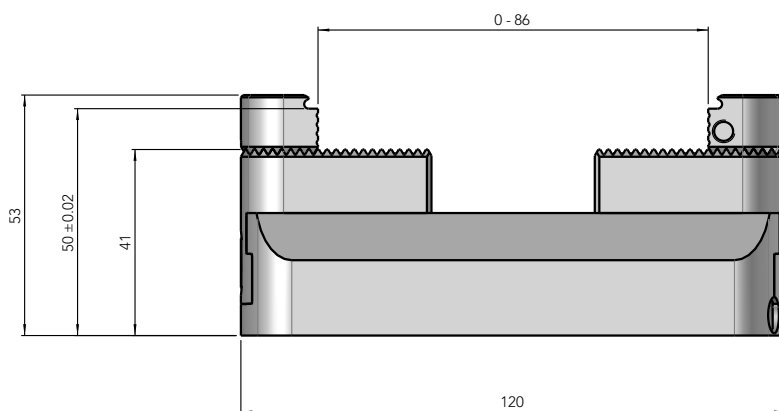
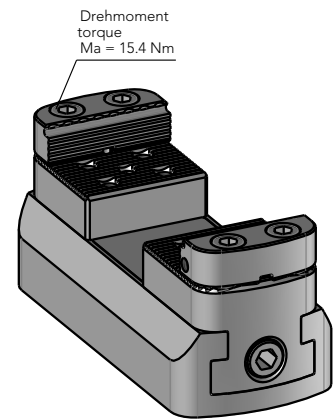
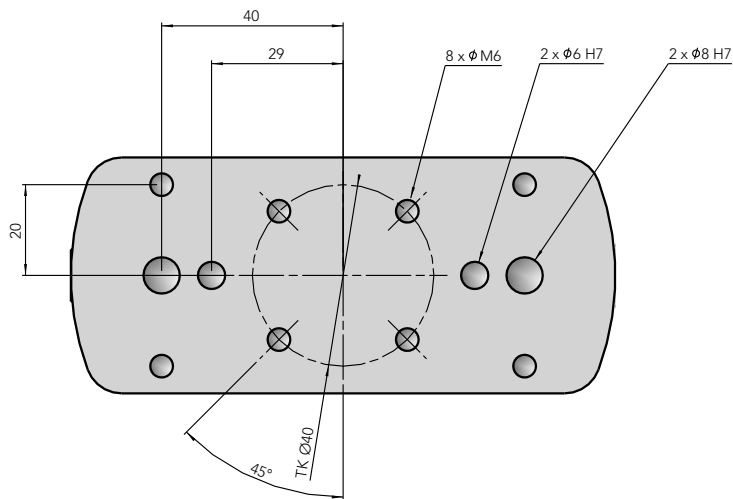
Dimension

LC-34



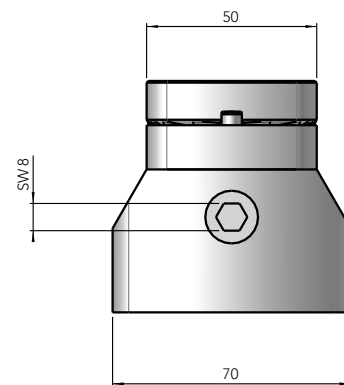
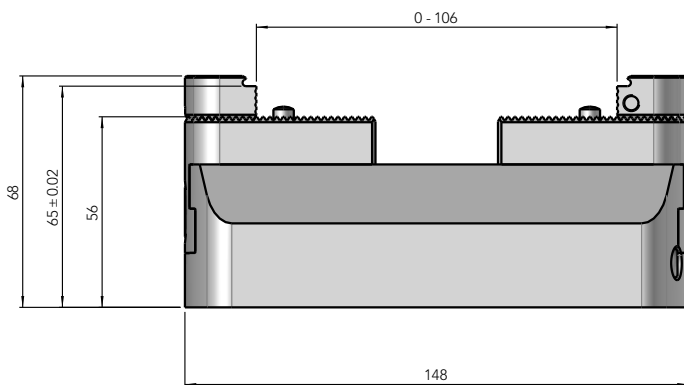
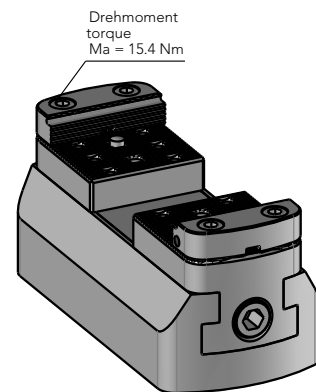
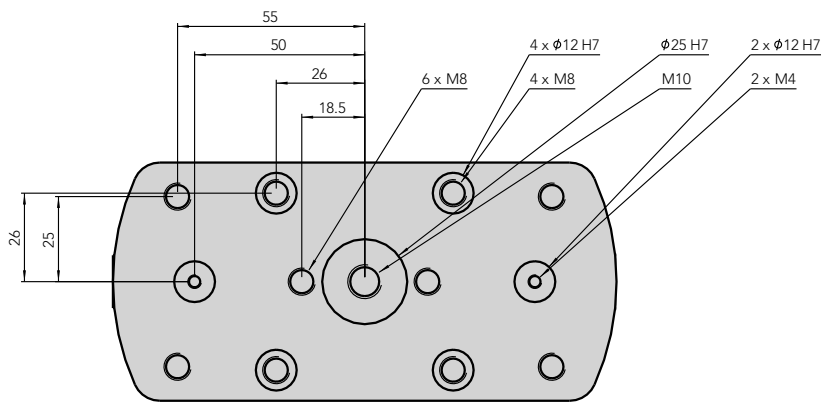
Dimension

LC-40



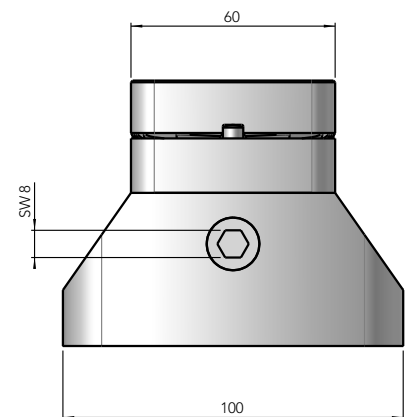
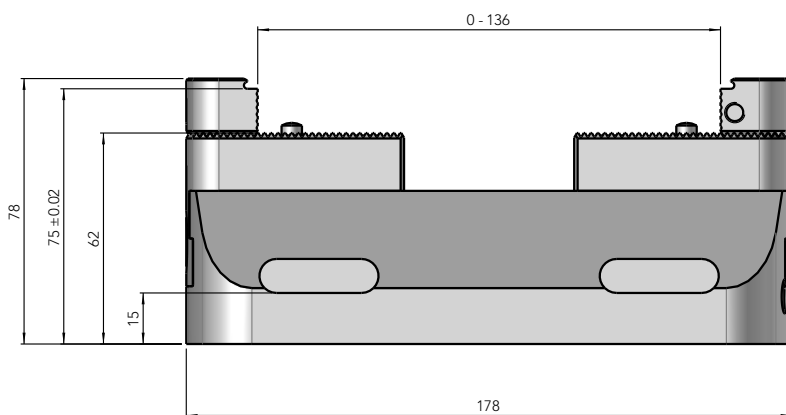
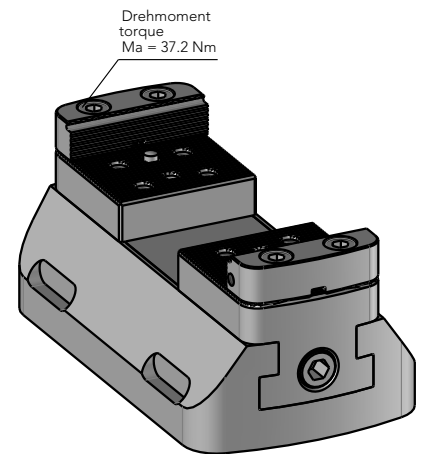
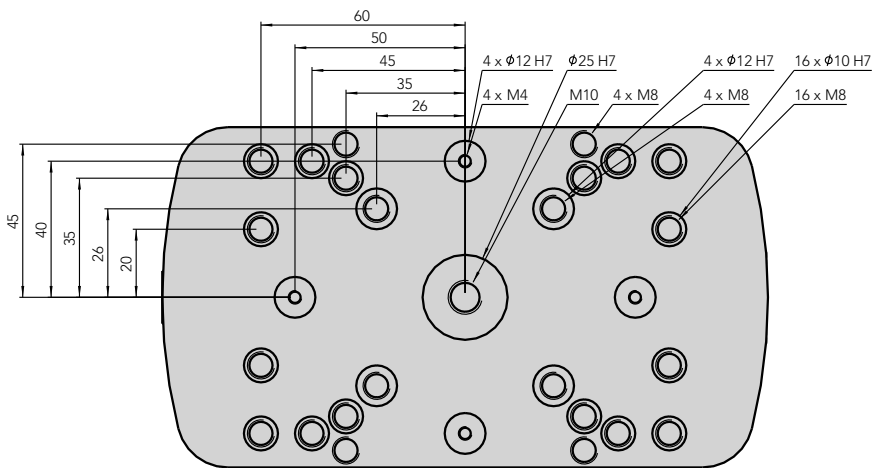
Dimension

LC-50



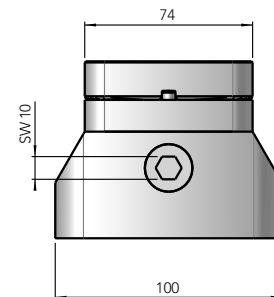
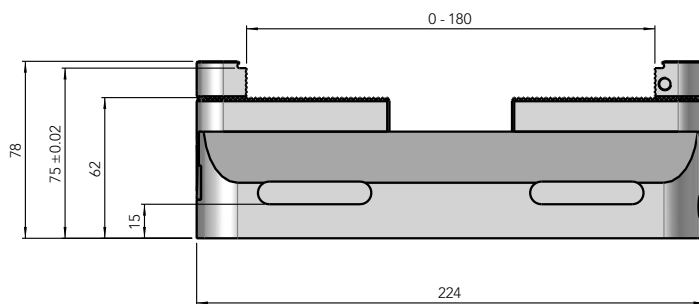
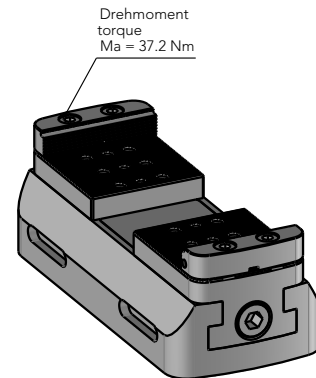
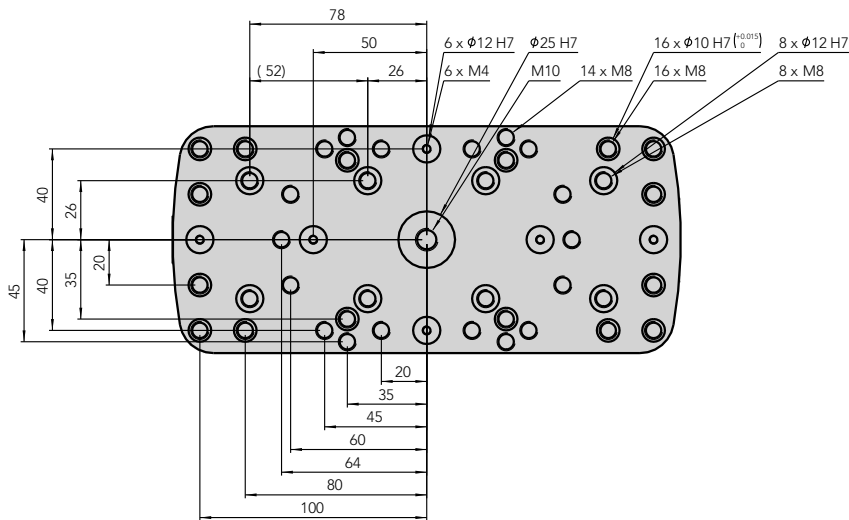
Dimension

LC-60



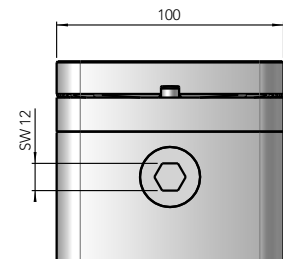
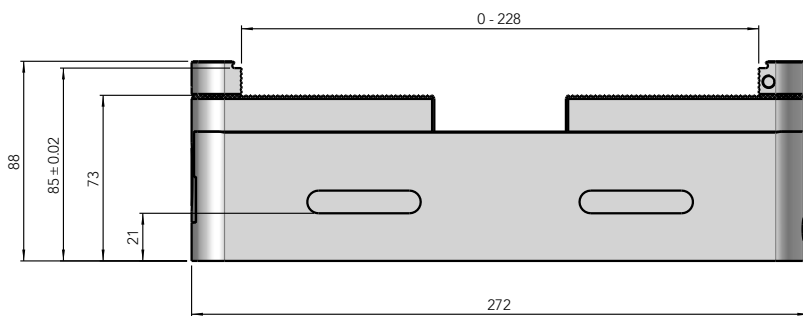
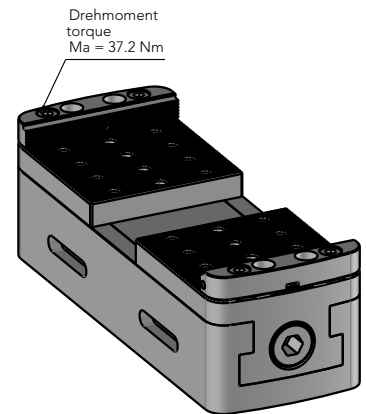
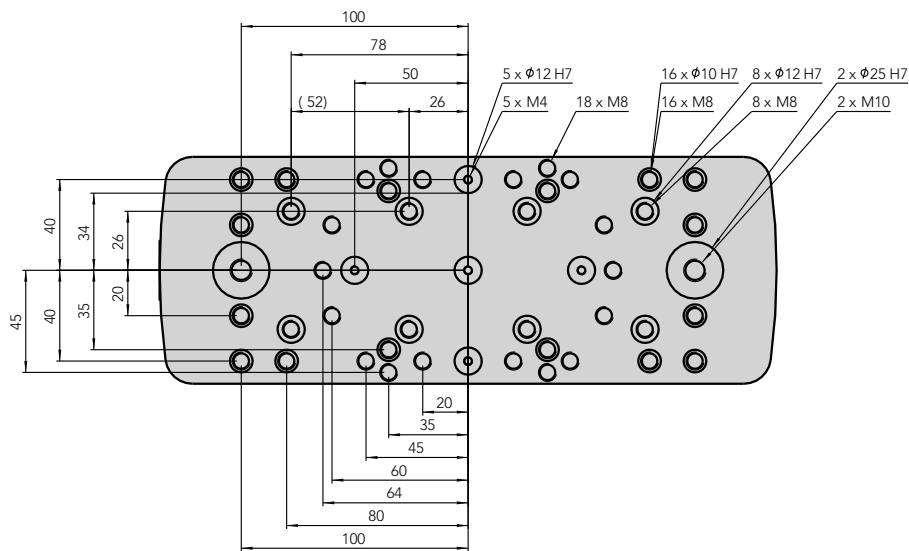
Dimension

LC-74



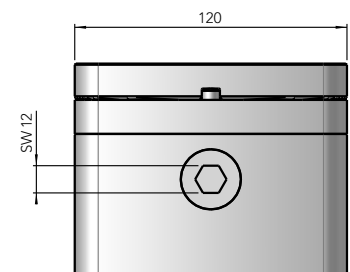
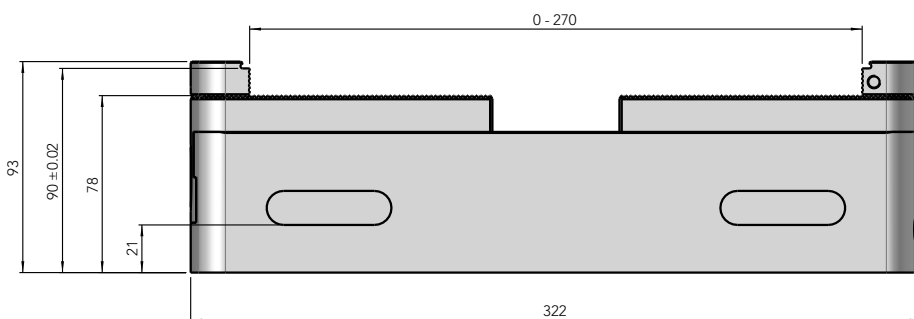
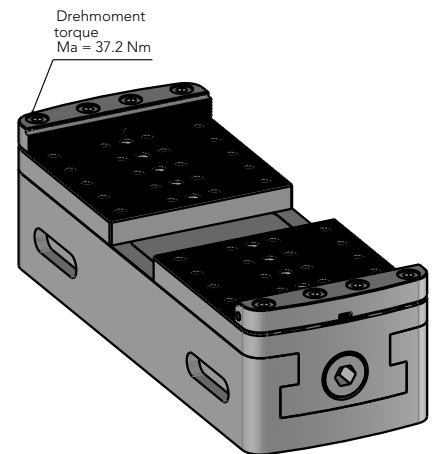
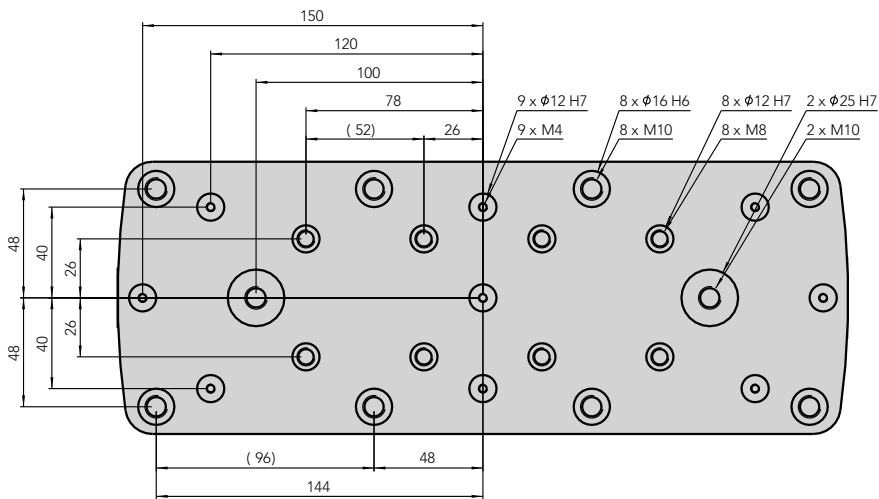
Dimension

LC-100



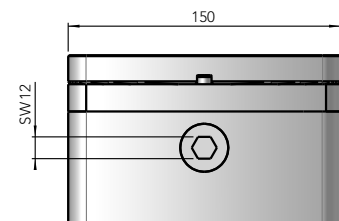
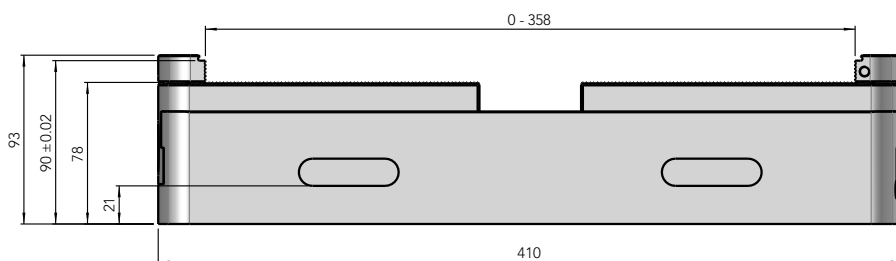
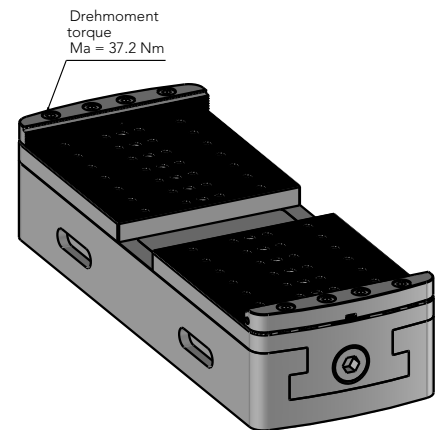
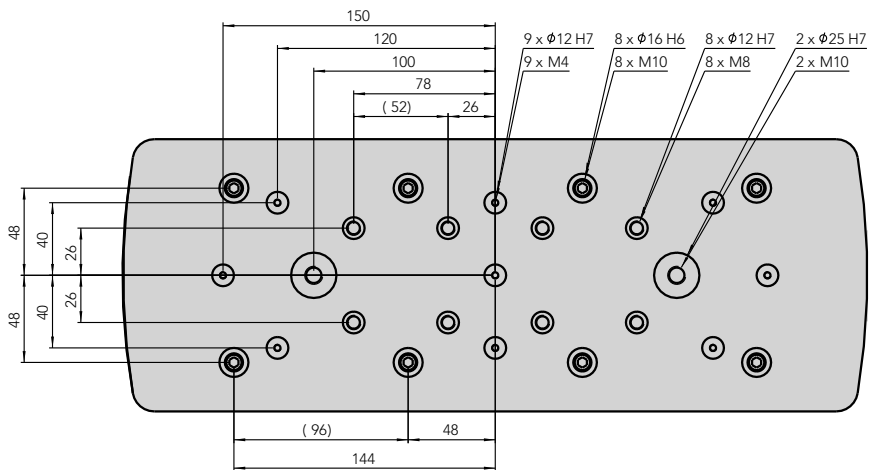
Dimension

LC-120



Dimension

LC-150



Applications

Zero-point clamping systems

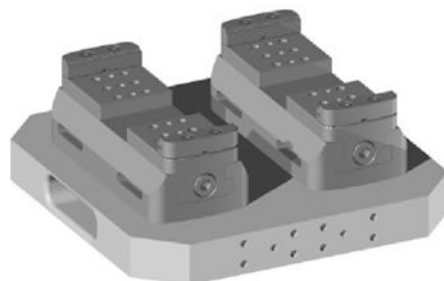
The basic bodies of the LC series make it possible to use many of the common pallet systems. For this purpose, only 2 fitting holes are required to align the LC correctly on the pallet.



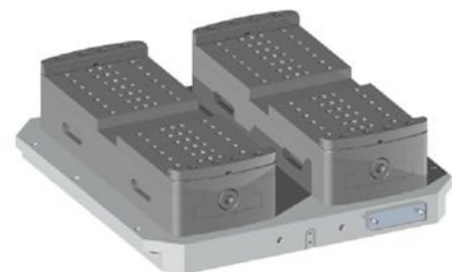
Clamping Device **1 x LC-40**
Zero-point clamping system **GPS-120**



Clamping Device **1 x LC-50**
Zero-point clamping system **ITS-148**



Clamping Device **2 x LC-74**
Zero-point clamping system **UPC-320**

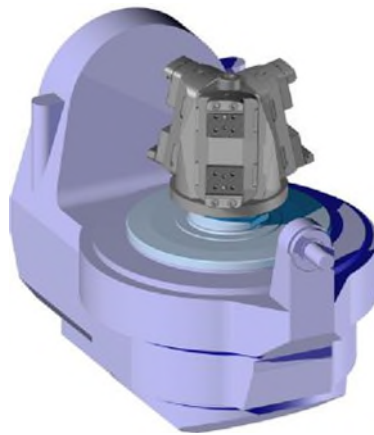


Clamping Device **2 x LC-150**
Zero-point clamping system **Delphin-448**

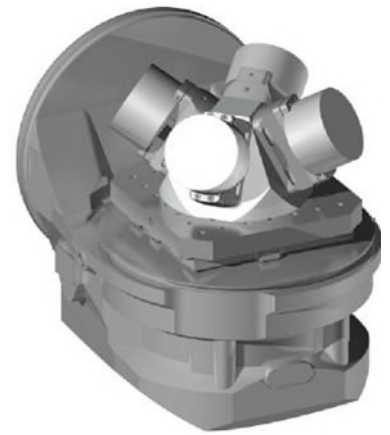
Applications

Fixtures

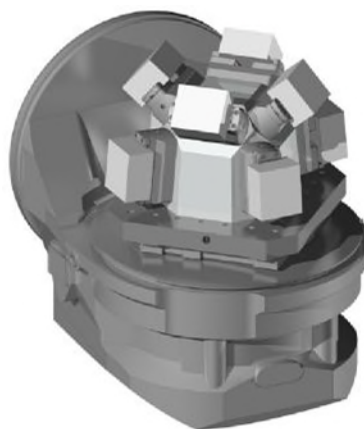
To achieve maximum flexibility and running time on the processing machines, you can use the LC series on pyramids, towers, or prisms. The low design and the large selection of jaws allows to maximise machine capacity.



Clamping Device **3 x LC-60**
Fixture **Pyramide**



Base Body **4 x LC-60**
Fixture **Pyramide**



Clamping Device **8 x LC-50**
Fixture **Igel**



Clamping Device **8 x LC-50**
Fixture **Tower**

Accessoires

Jaws

Pair of SC gripping jaws is included with delivery of Low Clamp, so you can clamp raw parts at no additional costs.

For clamping different workpiece shapes, following jaws are available.

Jaw width (mm)		34	40	50	60	74	100	120	150
SC-gripping jaw	Nr. 837150	X	X	X	X	X	X	X	X
Standard gripping jaw	Nr. 837250	X	X	X	X	X	X	X	X
High gripping jaw	Nr. 837300	X	X	X	X	X	X	X	X
Combi jaw	Nr. 837350	X	X	X	X	X	X	X	X
Step jaw	Nr. 837450	X	X	X	X	X	X	X	X
Prism jaw	Nr. 837500	X	X	X	X	X	X	X	X
Soft jaw aluminium	Nr. 837702	X	X	X	X	X	X	X	X
Soft jaw steel	Nr. 837703	X	X	X	X	X	X	X	X

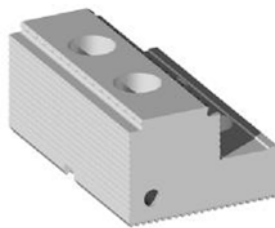
For the exact data of the jaws, please check the jaws catalogue.

Accessoires

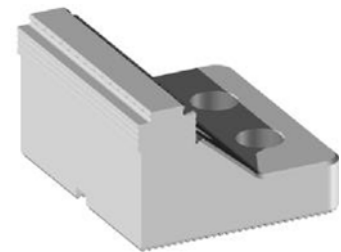
Jaws



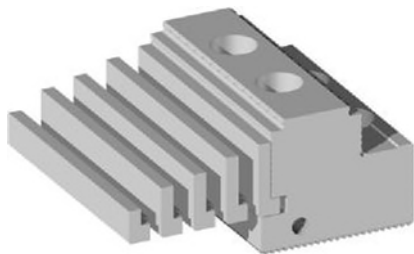
Nr. 837150



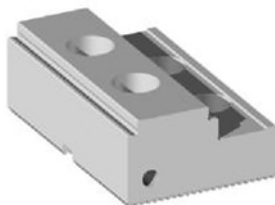
Nr. 837250



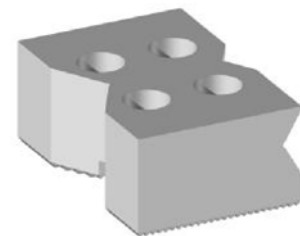
Nr. 837300



Nr. 837350



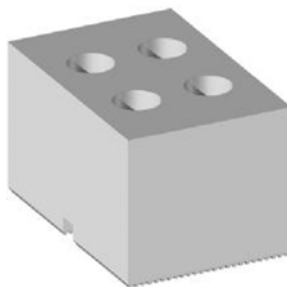
Nr. 837450



Nr. 837500



Nr. 837702



Nr. 837703

Accessoires

Automation Solutions

The LC-series can be included in any automation-solution. From workpiece handling to clamping device handling to pallet handling, you are best recommended with the LC-series.

Pallets +GF+ / System 3R (Number of possible devices)

LC-Sizes	LC-34	LC-40	LC-50	LC-60	LC-74	LC-100	LC-120
GPS 70	1	1					
Macro	1	1, 2					
Macro Magnum	1, 2, 3	1	1				
GPS 120	1,2						
GPS 240			1	1,2	1,2		
Delphin 398				1,2,3,4,6	1,2,3,4,6	1,2,3	1,2,3
Delphin 448				1,2,3,4,6	1,2,3,4,6	1,2,3	1,2,3
Dynafix 280				1,2,3	1,2,3	1,2	1,2
Dynafix 350				1,2,3,4,6	1,2,3,4,6	1,2,3	1,2,3

Accessoires

Automation Solutions

Pallets Erowa (Number of possible devices)

LC-Sizes	LC-34	LC-40	LC-50	LC-60	LC-74	LC-100	LC-120
ITS-148	1	1	1				
VPC 52 / 96	1, 2	1, 2	1	1	1	1	1
UPC 320				1,2,3	1,2,3	1,2,3	1,2
MTS 400				1,2,3,4,6	1,2,3,4,6	1,2,3	1,2,3

Further manufacturers can be requested directly by Gremotool.

Device handling

The LC series can be changed directly on zero-point Systems. For this purpose, the respective suitable drawing for the zero-point system will be integrated in the LC Serie. The clamping process can be carried out manually or by a suitable robot.

Direct clamping

The LC series can be equipped with straightening-elements for the table slot. This allows the user to fix the centre clamp quick and correctly on the slot table.

If the milling table has a hole grid, the straightening elements can be selected on the base of this table. Thanks to the fits, the position is completely determined when fixing. These accessories can be requested and obtained from Gremotool.



Impressum

Gremotool GmbH
Wilerstrasse 3
CH-9200 Gossau
Schweiz

www.gremotool.ch in
fo@gremotool.ch
+41 (0)71 930 03 90

Our general terms and conditions apply, which can be found on www.gremotool.ch. Further catalogues can be accessed on www.gremotool.ch.

Commercial Register:
UID-Nr. CHE-498.310.590

This document is protected by copyright. All rights reserved. Any use, even partial use, in particular use, in particular publication, duplication, or distribution, reproduction, editing and/or modification, requires the prior written agreement of Gremotool GmbH. Misprints and errors as well as technical changes reserved. Publication June 2023, edition 1

